

# SubZone

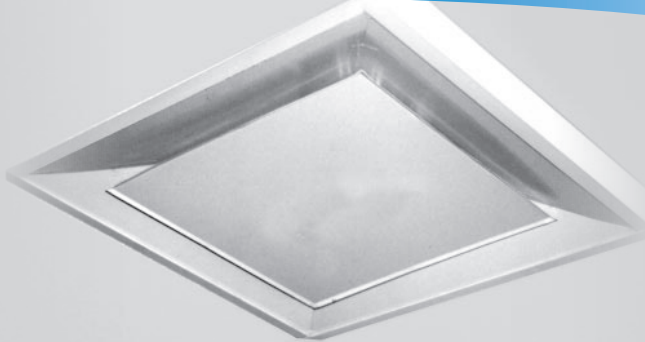
Stand-Alone or Floating Zone  
Modulating Damper Controlled with Auto Changeover Programmable

WIRELESS THERMOSTAT

# WD-FUSER

A Combination Damper and Diffuser

WIRELESS TRANSMITTER



As room load varies, the WD-Fuser modulates to control the flow of supply air, maintaining the smoothest possible flow of air coupled with the greatest ceiling attachment.

NOW CONTROLLED  
with the

## SUBZONE WIRELESS-PROGRAMMABLE THERMOSTAT

- ✓ Reduces VAV System Costs by 25% or More
- ✓ Delivers Air at Constant Velocity
- ✓ Auto Changeover Operation
- ✓ Maintains Temperature  $\pm 1$  Degree Setpoint
- ✓ Eliminates Air Dumping
- ✓ Installs in a 2' x 2' ceiling grid
- ✓ Substitute WD-FUSERS for VAV Boxes
- ✓ Upgrade Systems Without Replacing Ductwork

*This fully modulating diffuser provides room by room auto changeover operation, which controls both heating and cooling in each VAV zone.*

*This combination damper/diffuser incorporates a fluidic nozzle which provides each zone with exceptional temperature control and maximum comfort.*

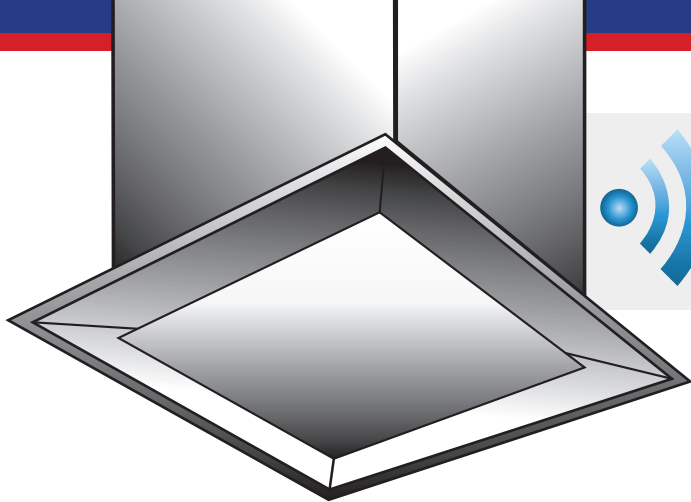
## THE PROBLEM SOLVER

Designed for over-conditioned areas



Your low cost solution to the problem of over heated or over cooled rooms

For additional information contact your distributor or representative,  
visit the web site at [www.zonexproducts.com](http://www.zonexproducts.com) or call **(800) 228-2966**



**WD-FUSER**  
Energy Savings/Comfort/Low Cost and High Value  
**WIRELESS THERMOSTAT**

## One kit - One Solution

Zonex Systems **Wireless WD-Fuser Kit** to manage and control over conditioned areas

THE **WD-FUSER UTILIZES FLUIDIC PRINCIPLES TO MAXIMIZE THE COANDA EFFECT**

### OPERATION

The SubZone is a battery powered auto changeover programmable thermostat that communicates via an RF wireless signal to a communicating damper board located on a fully modulating WD-Fuser. The system is designed for over-conditioned areas and prevents over-heating and over-cooling of individual or stand alone zones.



Auto changeover operation allows the SubZone thermostat to change from a cooling to a heating thermostat automatically. A duct sensor is included and installed upstream of the damper to determine the temperature in the duct. If the SubZone thermostat is calling for cooling and cool air is available in the duct the damper will modulate open. A heating call will close the damper. If the sensor determines warm air is available in the duct and the thermostat is calling for heat the damper will modulate open.

The SubZone system senses the duct temperature and compares it to the set point providing warm or cool air as required. If the thermostat is not calling for heating or cooling the damper will modulate to 40% for ventilation.

The SubZone allows you to effectively control problem areas by controlling the existing air supply to the problem room or zone. This versatile problem solver is also designed to control **supplemental or auxiliary heating devices**.

