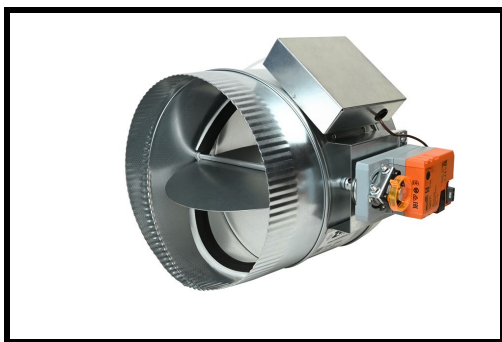


STBP ROUND ELECTRONIC BYPASS DAMPER

SUBMITTAL



Round Electronic Bypass Damper with Integrated Static Pressure Control (Part # STBP)

DESCRIPTION

The **Electronic Bypass Damper** includes a factory mounted actuator and electronic static pressure controller used to control static pressure in zoned systems. The Electronic Static Pressure Control is adjustable, controlling a modulating bypass damper to maintain static pressure as zone dampers modulate. The bypass system reduces air noise from the supply outlets caused by excessive air velocity.

On systems utilizing continuous fan operation, bypass will modulate based on system static. Bypass controller is adjustable to maintain static pressure range from .15" - .95" W.C. The Integrated Static Pressure Control (IPC) includes a quick start option or may be field adjusted to specified static pressure.

The electronic bypass is a modulating damper used for bypass applications. Bypass dampers are available from 6" - 18" round and 10x10 - 40x30 rectangular, with a maximum pressure differential of 1.75" W.C.

The 6" - 8" diameter damper cylinders are fabricated from 24 gauge steel and the 10" - 18" diameter cylinders from 22 gauge steel. The trailing end is crimped for ease of installation into duct work.

Bypass Dampers feature 24 VAC actuator. The integrated pressure controller operates the motor, and the actuator hat section is insulated to prevent condensation.

Bypass Dampers can be paralleled or slaved to provide additional bypass CFM when required. If slaving two or more bypass dampers, consider utilizing a larger rectangular bypass.

TECHNICAL DATA

Electronic Integrated Bypass Damper

Electrical:

Supply voltage: 24 VAC

Power consumption: 2.3 VA

Input: 24 VAC

Outputs:

- 24 VAC (Run open)
- 24 VAC (Run closed)

General:

Control Range: .15" to .95" W.C.

By-Pass Damper

Electrical:

Supply Voltage: 24 VAC

Power consumption: 2 VA maximum (1.5W)

Environmental:

Operating temperature: 32 to 122° F (0 to 50° C)

Operating humidity: 10 to 95% RH non-condensing

Storage temperature: 0 to 160° F (-18 to 71° C)

General:

Shell: 22-24 gauge steel

Shaft: 5/16" dia. round aluminum

Bushings: Celcon

Actuator: Belimo; power open/power close

Stroke: 60°

Pressure drop: < .04" W.C. @ rated CFM

Rev 01/25

STBP ELECTRONIC BYPASS DAMPER

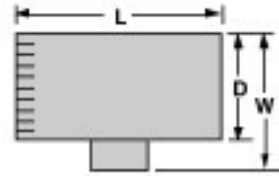
TYPICAL CAPACITIES

Round Bypass Selection Table

Diameter	CFM
6"	300
8"	560
10"	900
12"	1250
14"	1700
16"	2200
18"	2600

Dimensional Data

Part #	Diameter	Length	Width
STBP06	6"	10"	9"
STBP08	8"	10"	11"
STBP10	10"	12"	13"
STBP12	12"	14"	15"
STBP14	14"	14"	17"
STBP16	16"	14"	19"
STBP18	18"	14"	21"



SENSOR LOCATION

